

# FIRETABLE

HARBOUR<sup>®</sup>  
OUTDOOR

## Fire-01A / Fire-01B

### FRAME



Asteroid Powdercoat



White Powdercoat

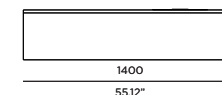
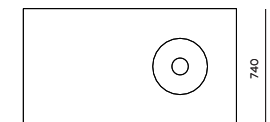
### TABLE TOP



Granite - Black



Marble - White



### SPECIAL FEATURES



#### PROTECTIVE COVER

### DESCRIPTION:

Allow the radiant flames of a Harbour Outdoor fireplace to cast a warm glow on your space. We now offer 3 fuel types. Choose between plumbed natural gas, readily available propane, or our eco-friendly bioethanol fuel system. We make it easy for you to achieve exactly what you want, for exactly where you want it.

### PROTECTIVE COVERS:

Protect your investment with water-repellent Sea-Sprae<sup>®</sup> fabric; protective backside coating, UV resistant.

### SHIPPING AND DELIVERY:

Stock frames and stock cushions delivered in 1-3 weeks.  
Stock frames with COM cushions delivered in 3-6 weeks.  
Custom Orders delivered in 10-14 weeks.

### WARRANTY:

FRAMES: 5 limited warranty on structural integrity.  
MATERIALS: 2 year limited warranty.

### TECHNICAL INFORMATION

**POWDER COATED ALUMINIUM:**  
Asko Nobel<sup>®</sup> handcrafted, powder coated, rust-proof aluminium Frame, reinforced signature connection points.

**BLACK GRANITE:**  
Flamed and brushed, dense, stain resistant, and easy to maintain. Perfect for indoor or outdoor use.

# FIRE TABLE

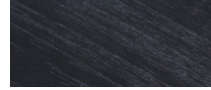
HARBOUR<sup>®</sup>  
OUTDOOR

## Fire-01C Fire table

### FRAME

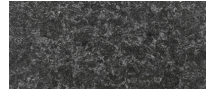


Teak natural

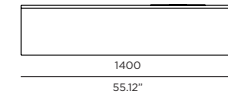
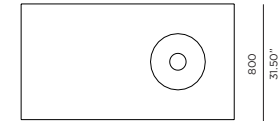


Teak burnt charcoal

### TABLE TOP



Black Granite



### SPECIAL FEATURES



PROTECTIVE COVER

### DESCRIPTION:

Allow the radiant flames of a Harbour Outdoor fireplace to cast a warm glow on your space. We now offer 3 fuel types. Choose between plumbed natural gas, readily available propane, or our eco-friendly bioethanol fuel system. We make it easy for you to achieve exactly what you want, for exactly where you want it.

### PROTECTIVE COVERS:

Protect your investment with water-repellent Sea-Sprae<sup>®</sup> fabric; protective backside coating, UV resistant.

### SHIPPING AND DELIVERY:

Stock frames and stock cushions delivered in 1-3 weeks.  
Stock frames with COM cushions delivered in 3-6 weeks.  
Custom Orders delivered in 10-14 weeks.

### WARRANTY:

FRAMES: 5 limited warranty on structural integrity.  
MATERIALS: 2 year limited warranty.

### TECHNICAL INFORMATION

**TEAK:**  
100% plantation grown, premium A-Grade teak.

**BLACK GRANITE:**  
Flamed and brushed, dense, stain resistant, and easy to maintain. Perfect for indoor or outdoor use.

# FIRE TABLE

HARBOUR®  
OUTDOOR

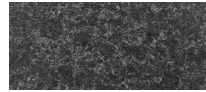
## CC-12 Fire table

### FRAME

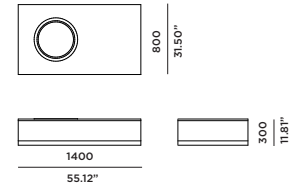


Grey Weave

### TABLE TOP



Black Granite



### SPECIAL FEATURES



PROTECTIVE COVER

### DESCRIPTION:

Perched on elegant stainless steel box bases, each piece of the Camp Cove collection features a unique pairing of natural and metal elements to create a refined aesthetic ideal for everyday use.

The collection takes inspiration from the harbour-side bay of Sydney's Camp Cove, a waterfront haven boasting millionaire views married with paired back luxury architecture and stunning natural coastline. Inspired by the sophisticated opulence of the Camp Cove area, understated woven detail of this collection brings a luxurious yet cost effective finish that will add an element of polished style to your outdoor space.

### PROTECTIVE COVERS:

Protect your investment with water-repellent Sea-Sprae® fabric; protective backside coating, UV resistant.

### SHIPPING AND DELIVERY:

Stock frames and stock cushions delivered in 1-3 weeks.  
Stock frames with COM cushions delivered in 3-6 weeks.  
Custom Orders delivered in 10-14 weeks.

### WARRANTY:

**FRAMES:** 5 limited warranty on structural integrity.  
**MATERIALS:** 2 year limited warranty.

### TECHNICAL INFORMATION

**BLACK GRANITE:**  
Flamed and brushed, dense, stain resistant, and easy to maintain. Perfect for indoor or outdoor use.

**Weave:**  
All weather wicker - 4mm